

AL-5687 (FAA)

VOR/DME OJC <b><u>113.0</u></b> Chan <b>77</b>	APP CRS <b>354°</b>	Rwy Idg <b>4098</b> TDZE <b>1085</b> Apt Elev <b>1096</b>
--	------------------------	---

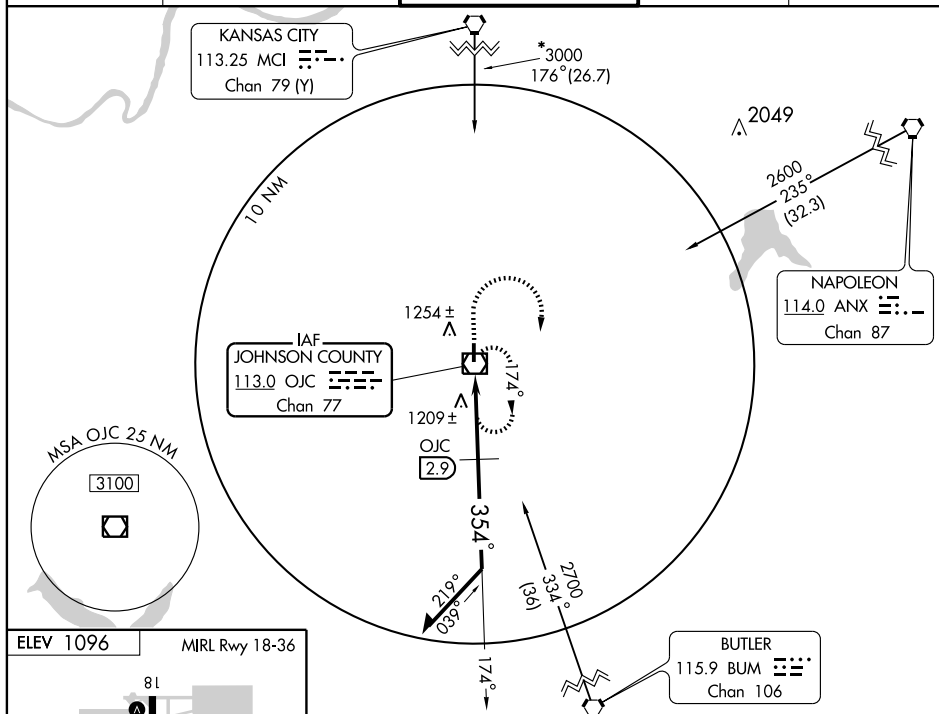
VOR RWY 36  
OLATHE/JOHNSON COUNTY EXECUTIVE (OJC)

MALSR

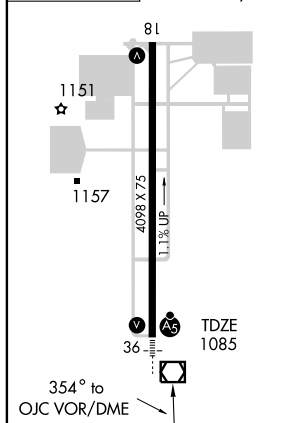
**MISSED APPROACH:** Climb to 1700 then climbing right turn to 2600 direct OJC VOR/DME and hold.

VOR minimums: For inoperative MALSR, increase S-36 Cats A/B visibility to 1 mile.  
DME minimums: For inoperative MALSR, increase S-36 Cats A/B/C visibility to 1 mile.

ATIS <b>119.35</b>	KANSAS CITY APP CON <b>118.9 294.7</b>	EXECUTIVE TOWER ★ <b>126.0</b> (CTAF) <b>0 225.4</b>	GND CON <b>121.6</b>	UNICOM <b>122.95</b>
-----------------------	---	---	-------------------------	-------------------------



ELEV 1096	MIRL Rwy 18-36
-----------	----------------



CATEGORY	A	B	C	D
S-36	1560- $\frac{3}{4}$	475 (500- $\frac{3}{4}$ )		NA
CIRCLING	1560-1	464 (500-1)	1560-1 $\frac{1}{2}$ 464 (500-1 $\frac{1}{2}$ )	NA

**DME MINIMUMS**

S-36	1540-1 444 (500-1)	1560-1 464 (500-1)	1560-1 $\frac{1}{2}$ 464 (500-1 $\frac{1}{2}$ )	NA
------	-----------------------	-----------------------	--	----

OLATHE, KANSAS  
Amdt 11A 06103

OLATHE/JOHNSON COUNTY EXECUTIVE (OJC)  
38°51' N-94°44' W **VOR RWY 36**

NC-2, 06 JUL 2006 to 03 AUG 2006